

Concentration and volume reduction device
by evaporating waste liquid

Evaporation and Concentration Device



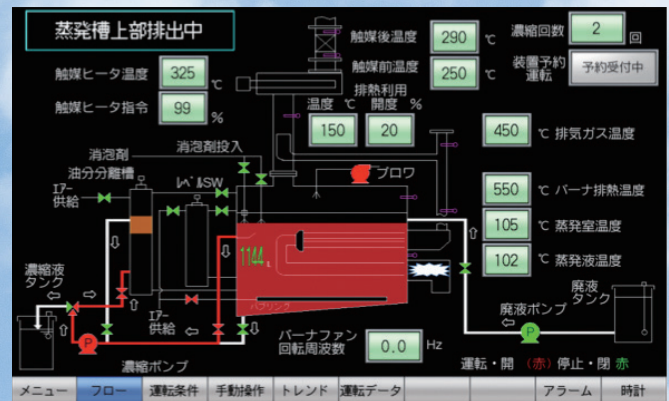
Soraie

● Features

- To evaporate and concentrate water contained in the waste liquid
- Exhaust odor components are decomposed by thermal catalyst to deodorize and detoxify
- To analyze data by sequencer and operate automatically with optimum value control
- Valious settings and status are visible on the touch panel display



Patented



Example of touch panel display

Scan here to
explanation
and video of
Soraie



Upgraded by “ Remote control monitoring
system” for three months after installation

※Specifications are subject to change without notice

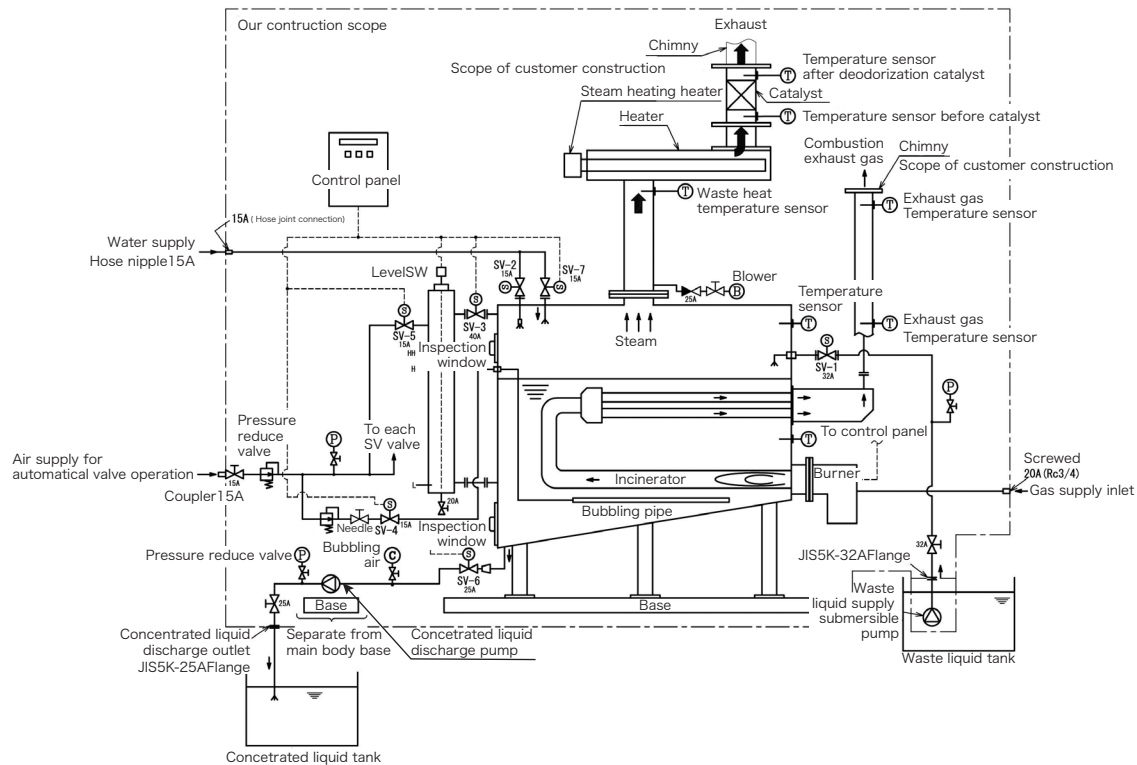
株式会社 **コンヒラ**
CONHIRA CO., LTD.

<Home-page> <https://www.conhira.com/>
<E-mail> info@conhira.com

Mechanism

- To heat waste liquid while bubbling treatment and evaporate water
- To make evaporation efficiency better by adding waste liquid in evaporating room while evaporating treatment
- To emit concentrated liquid automatically when reaching the set temperature or number of times of concentration

Flow Chart

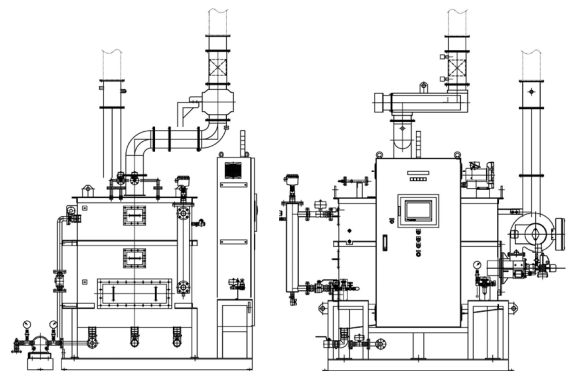


Model and specification list

Model	CEC-20	CEC-50	CEC-75	CEC-100	CEC-200
Processing power (ℓ/Hr) ※1	20	50	75	100	200
Power consumption (kW) ※2	10	20	26	34	66
Equipment dimension ※3	W1700	W2400	W2800	W2800	W3300
	D1200	D1700	D2400	D2400	D3300
	H2300	H2700	H3200	H3200	H3200
Heat source	Electric heater/ Steam	Steam/Gas burner/ Kelosene burner/Heavy oil burner			
Utility	Electricity · Water · Air				
Power source	200V 3Φ 50/60Hz				

- ※1 It is possible to produce other than listed processing power
 ※2 Required consumption electricity when using heat source other than electric heater
 ※3 Dimensions are subject to change without notice

Outline



Head Office/2-2-23, Kitakouge-Cho, Imabari Ehime, Japan
 (〒794-0812) Tel +81-898-23-6660 Fax +81-898-23-6698
 Kobe Office/3-3-25 Minatojima Minami Machi, Chuo-ku, Kobe, Japan
 (〒650-0047) Tel +81-78-599-7533 Fax +81-78-599-7532

※Specifications are subject to change without notice